

## S W E P I N S T A L L - S E R I E S 6

### Pre Requisites

---

- This installation should only be attempted by a skilled member IT Staff.
- The individual installing this software should be experience in installing software in a Microsoft Windows environment.
- The installation will require Administrator rights on the local machine.

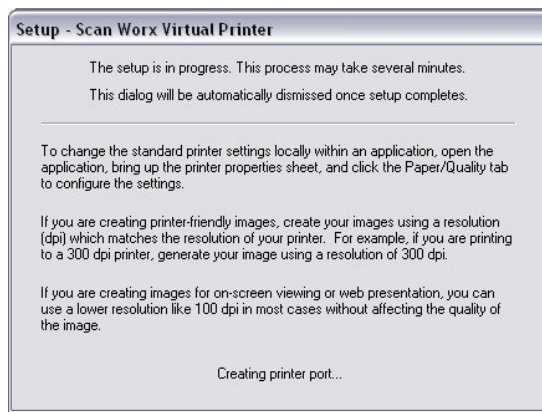
### Installing the Scan Worx Virtual Printer

---

1. On the new PC, click on Start > Run (for Windows XP), or press Windows-R on the keyboard (for Windows Vista).
2. Type the following (substituting *servername* for the name of the server Invu was installed on):

```
\\servername\invu\install files\Scanworx Printer Install\zvprt5_setup.exe
```

3. This will install the two Virtual Printers. It will display a splash screen as follows:



4. Once the install is finished, the splash screen disappears.

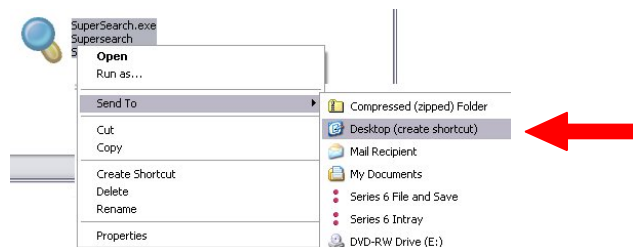
## Installing the SWEP

---

5. On the new PC, click on Start > Run (for Windows XP), or press Windows-R on the keyboard (for Windows Vista).
6. Type the following (substituting *servername* for the name of the server Invu was installed on):

\\servername\invu\install files\

7. Right click on the **SWPS Ltd** folder and choose Copy.
8. Open My Computer and browse into C:\Program Files.
9. Right-click and choose Paste.
10. Go into the SWPS Ltd folder, and right-click on the Supersearch.exe.
11. Select Send To > Desktop (create shortcut)



12. Close the windows and get back to the Desktop.
13. Double-click on the SuperSearch icon and test it (you may rename it first if you wish). If you encounter any problems contact our Support team on **01223 597808**